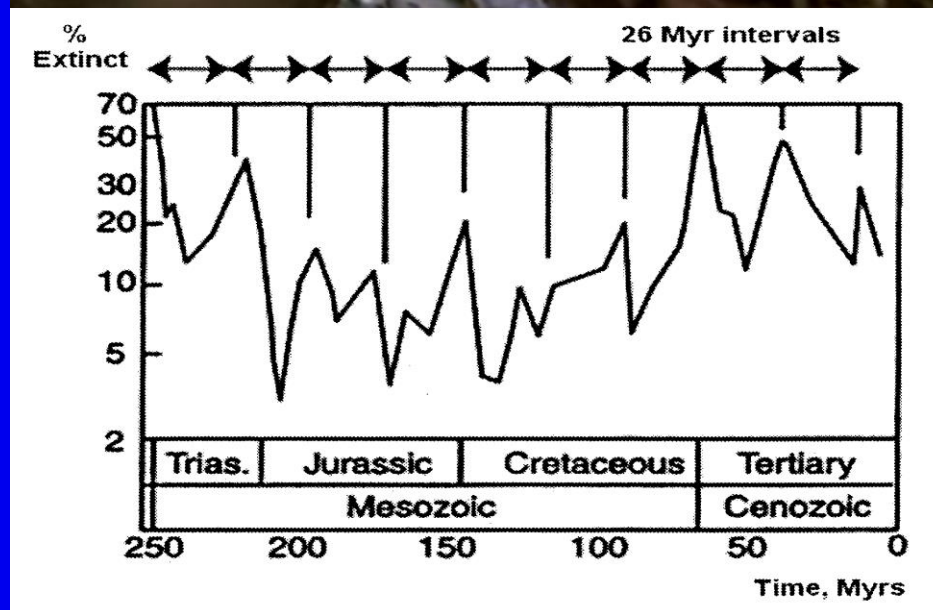


Dark Companion of the Sun

Takaaki Musha

地球上の生物の周期的大絶滅



南米で発見された地球に近づく大天体の図



Russian Expedition to Tibet



Tibet Expedition by Russian Group

G-14 ИСТОРИЯ СОВРЕМЕННОСТИ ИГ

№7(94)
2001 год

СС в поисках Атлантиды



Эрнст Шафер (в центре), возглавивший экспедицию СС в Тибет



Шафер и Бруно Бегер (второй слева) в тибетском монастыре



Древний храм Хинду в Непале, украшенный знаком свастики. Такие же знаки высечены на многих древних храмах в Мексико, Тибете, Индии

Unique archive photos of German expedition to Tibet 1938-39 year

vlad9vt

Report about the Tibet expedition

Kydshe
Kan & Joesann

в результате которых внезапно произошла гибель человечества и животных. При этом, каждый четвертый цикл вхождения этой планеты в солнечную систему грозит неизбежным мировым потопом на Земле и гибелью цивилизации, из-за характерной динамики вращения планет, которые естественно выстраиваются своими орбитами в определенной последовательности.

Так, Земля, в этом случае, будет обрвана к планете пришельцу не с материковой стороны, а со стороны Тихого океана. Вода находилась на Земле с противоположной стороны от материковой части, из-за сближения с планетой пришельцем, которая проходит через пояс астероидов, из-за ее гигантских размеров и вращения, будет вытеснена на материки. Высота волны составит до 7 км., со скоростью движения до 1000 км/ч. Последний (третий цикл) вращения планеты произойдет вокруг солнца 5ил в 1586 году до н.э. Очередное вхождение планеты в солнечную систему ожидается в 2009 году следующего столетия и соответственно в 2014 году (с учетом поправок за счет разницы между юлианским и григорианским календарями, а также юйским календарем и тропическим годом), но утверждения тибетских монахов произойдет латый Армагеддон (конец света),

the next
page
number 69
of
the report
about the
Tibet
expedition

vlad9vt

**((' i translate only the facts and materials relating to the
Hollow Earth and Nibiru ''') vlad9vt**

**In September 1925, in Tibet, was organized expedition to Lhasa,
members of 10 persons led by Jacov Blumkin, working
in a scientific laboratory, "OGPU" in Kraskovo
(led by E. Gopius).**

**The laboratory was part of a special department "OGPU"
(led by G. Boki).**

**The expedition was to: clarify the geographical routes,
and search the - "City of the Gods",
in order to obtain TECHNOLOGY of
previously unknown weapon.**

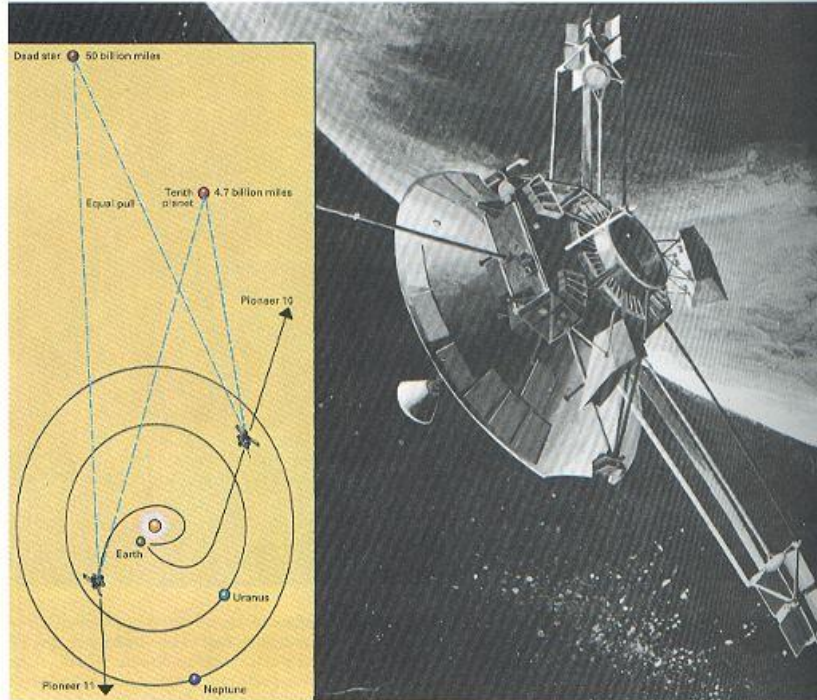
As well as the revolutionary agitation propaganda.

**((i translate only the facts and materials relating to the
Hollow Earth and Nibiru "")) vlad9vt**

**Under the Earth ground tibetan
monks kept the secrets of past civilizations, which when
ever existed on Earth. According Blumkin - these civilizations
were - 4, our civilization is the fifth in the world (on Earth)!
According to the secret teachings of the Buddhist Tibetans,
"Wah-ju" - will inevitably cause
the death of every civilization on Earth is - a rotation around the Sun
more a huge one unknown planet, in three times more than the Earth,
with a large internal store of heat and water (the planet is hollow inside
too - like Earth). The planet rotates in a clockwise direction around the
Sun, in contrast to Earth and other planets in Solar System. So when she
enters the plane of rotation planets of the Solar System, resulting in a
powerful electro-magnetic vortex flow (and gravity), every 3,600 years on
Earth occur natural disasters !**

Pioneer Project searched for the rim of the solar system

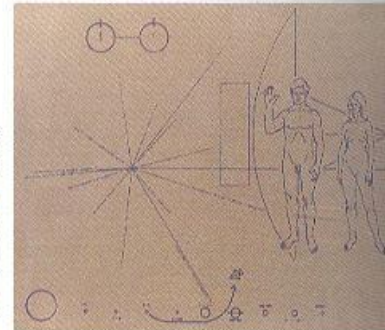
2488 | SPACE PROBE



Above: Pioneer 10 became the first craft to pass into interstellar space in 1983. The diagram (inset) shows the path of the two Pioneer probes. Right: The pictorial plaque carried by Pioneer 10 contains information about Earth and humanity.

rockets to keep the spacecraft attitude correct while the main retro-rocket slowed the craft down. This was then ejected and the vernier rockets took the spacecraft down to a soft landing. An essential feature of this technique is an automatic onboard controller linked to a radar altimeter and velocity sensor working on the DOPPLER principle, which enables the craft to know how high above the surface it is and how fast it is moving. (Guidance from Earth would be difficult because of the two and a half second delay in the round trip of a radio signal between Moon, Earth and Moon.) This system is now standard for soft landing space probes.

Another device was the crewless lunar rover, the Lunokhod series placed on the Moon by the U.S.S.R.



These were carried aboard soft landing craft and moved about the Moon's surface under the control of a driver on Earth. The vehicles were equipped with

新聞に掲載された記事



At Venus, a view of planet surface would be almost black in the darkness of space.

...from the ... Venus ... the ...
... Venus ... the ...
... Venus ... the ...
... Venus ... the ...
... Venus ... the ...

... Venus ... the ...
... Venus ... the ...
... Venus ... the ...
... Venus ... the ...
... Venus ... the ...

... Venus ... the ...
... Venus ... the ...
... Venus ... the ...
... Venus ... the ...
... Venus ... the ...

Planet 9—It's Real! But There?

... Planet 9 ... the ...
... Planet 9 ... the ...
... Planet 9 ... the ...
... Planet 9 ... the ...

... Planet 9 ... the ...
... Planet 9 ... the ...
... Planet 9 ... the ...
... Planet 9 ... the ...

... Planet 9 ... the ...
... Planet 9 ... the ...
... Planet 9 ... the ...
... Planet 9 ... the ...



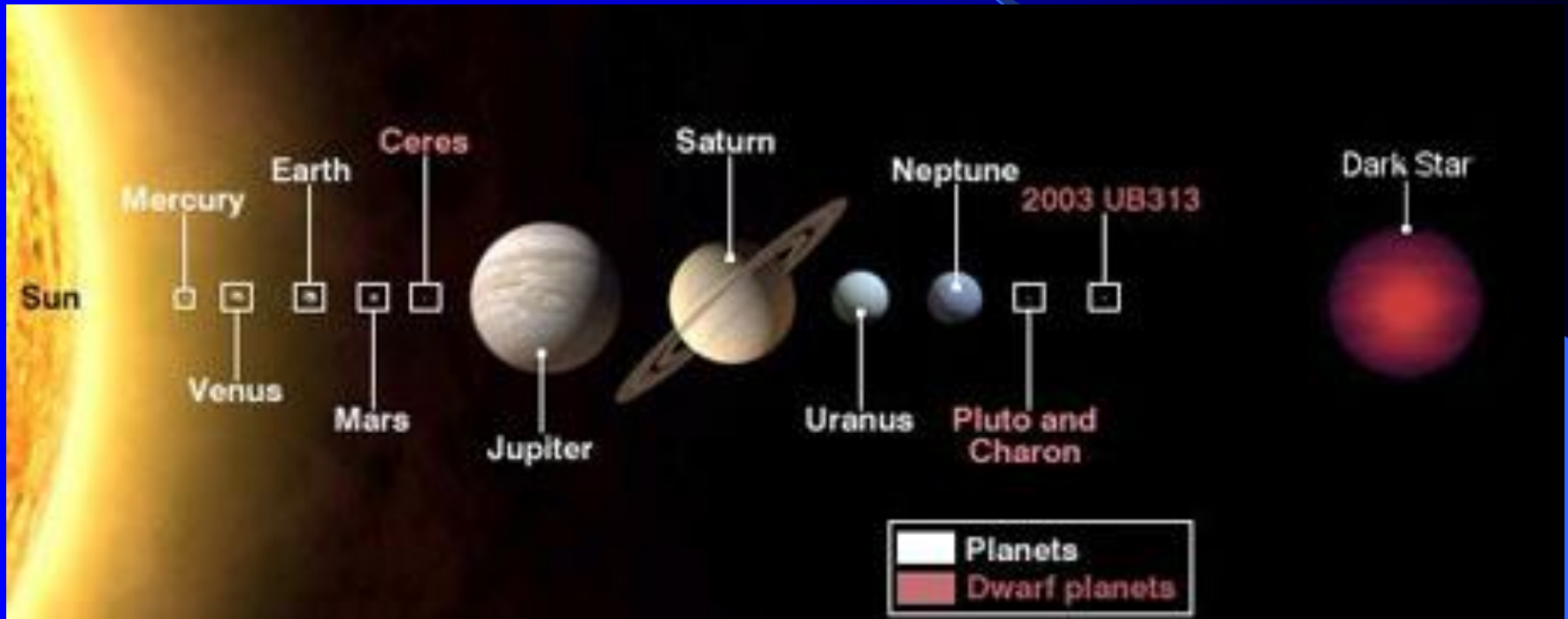
In Appalachia, Proud Faces Meet Troubled Time

... Appalachian ...
... Appalachian ...
... Appalachian ...

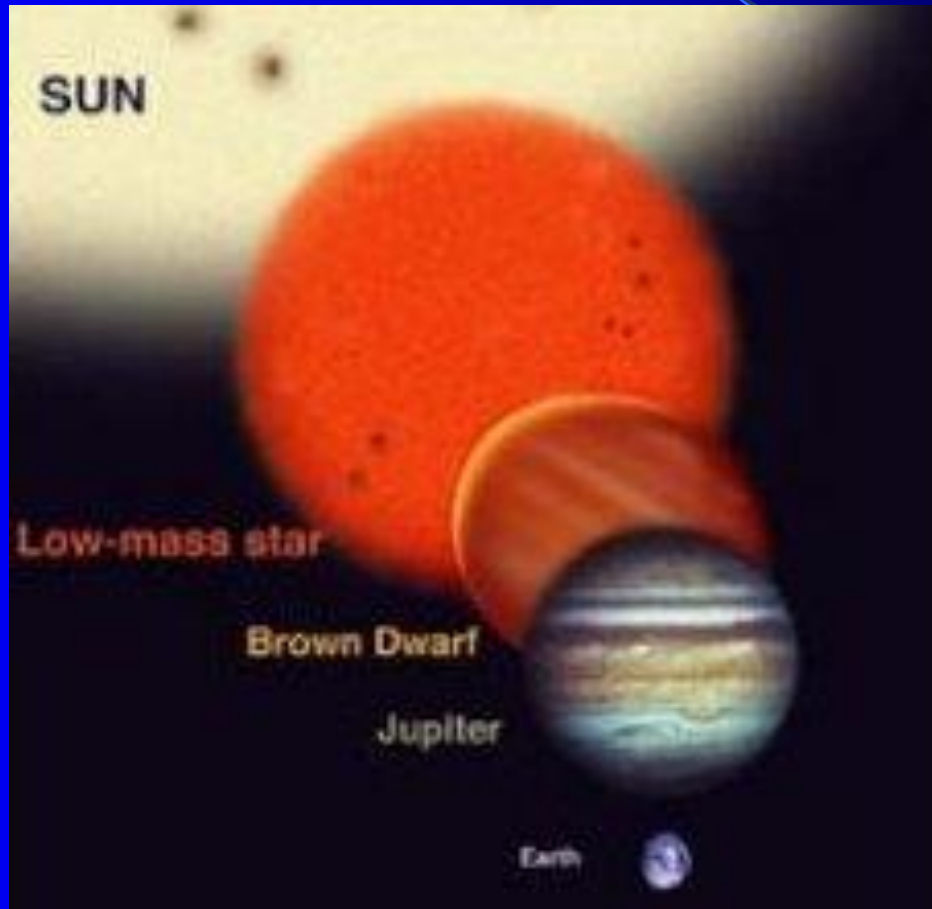
... Appalachian ...
... Appalachian ...
... Appalachian ...
... Appalachian ...

... Appalachian ...
... Appalachian ...
... Appalachian ...
... Appalachian ...

The size of the Dark star compared with other planets



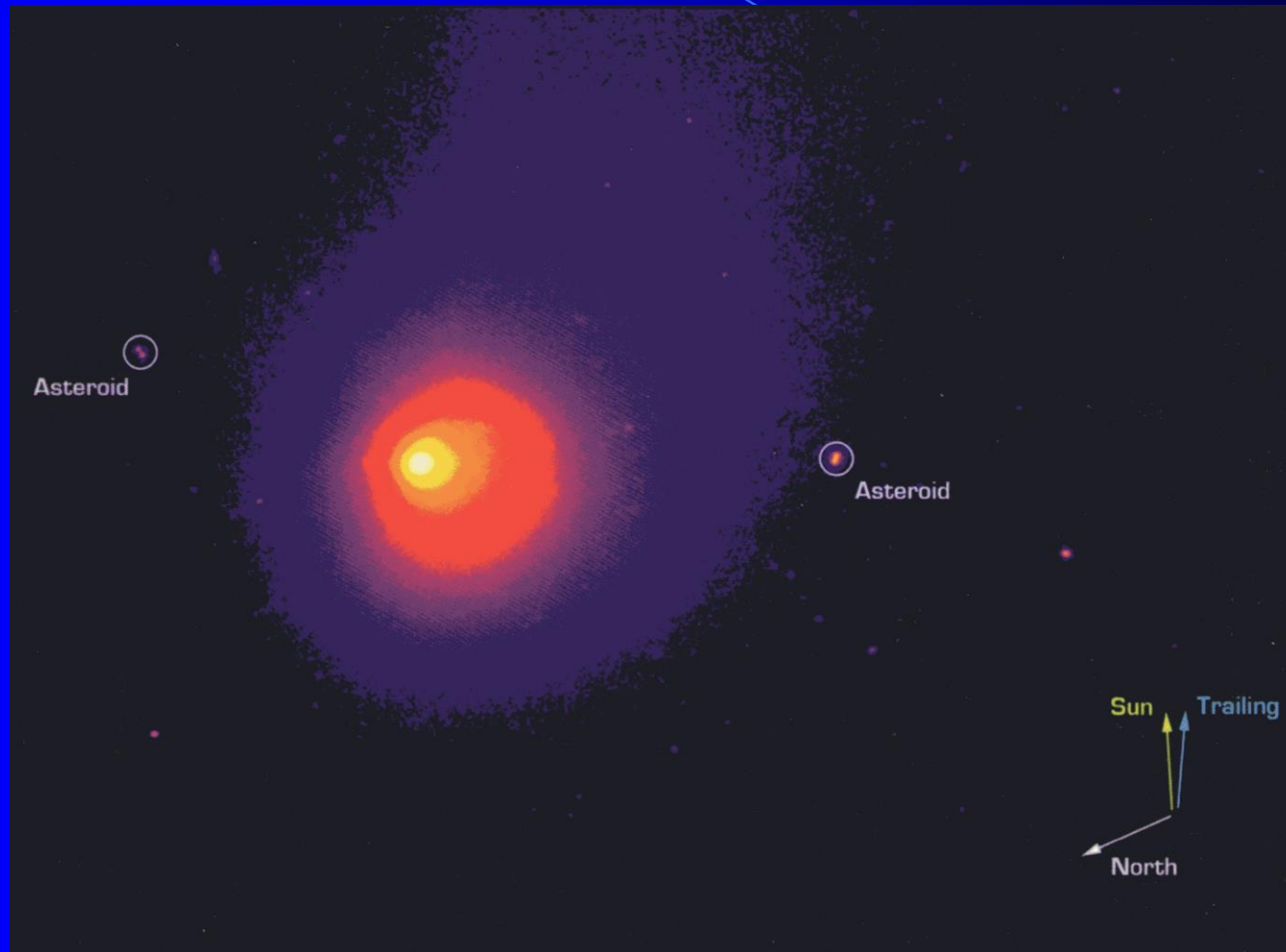
The Size of the Brown Dwarf



NASA WISE



ネメシスの写真



**Nibiru is a giant planet that was between Mars and Jupiter.
This planet has many names : Marduk, Maldek, Lumer, Nemesis, Tiamat,
Phaeton.**

**Asteroid Belt is the pieces of Nibiru and part of her moons.
After the war - the giant planet Nibiru changed the orbit,
She is approaching to the earth every 3600 years,
but terrible destruction and flooding on the earth
occur only every fourth cycle.**

**Нибиру это гигантская планета которая была между Марсом и Юпитером
У этой планеты много названий - Мардук, Мальдек, Лумер, Тиамат,
Немезида, Фазтон.**

**Астероидный пояс - это куски Нибиру и часть её лун.
После войны - гигантская планета Нибиру изменила свою орбиту.
Она приближается к земле каждые 3600 лет -
но страшные разрушения и наводнения происходят
на земле только в каждый четвёртый цикл.**

**Tibetan leader said about the 2014 year :
"Water will be pushed to the mainland(on to the
continents) .**

**The tsunami wave height will be up to 7 km in
height !, And the speed of the waves - up to
1000 kilometers per hour !**

**The last (third cycle) the alien planet's rotation
around the Sun was in 1586 BC.**

**The next occurrence of the planet in the Solar
System is expected in 2014 ."**

Planet X Tracker at the Antarctic Continent



Photo of the planet X

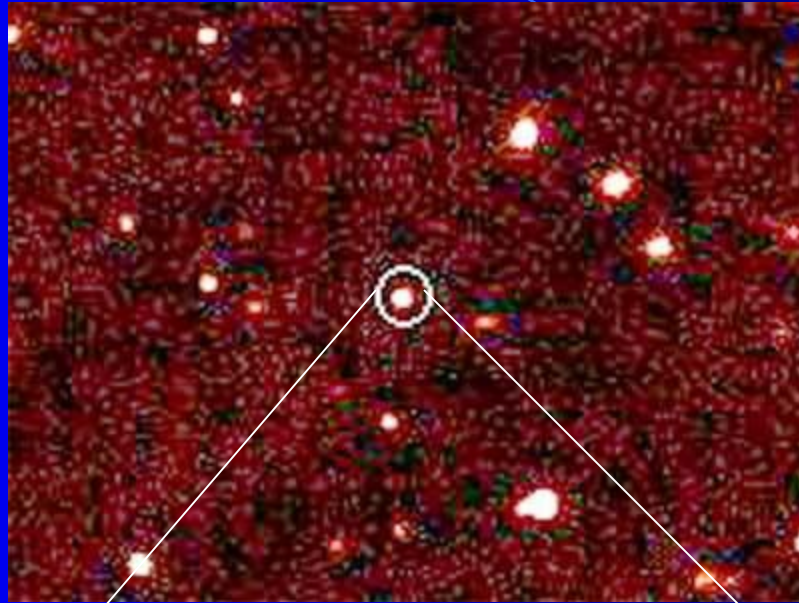
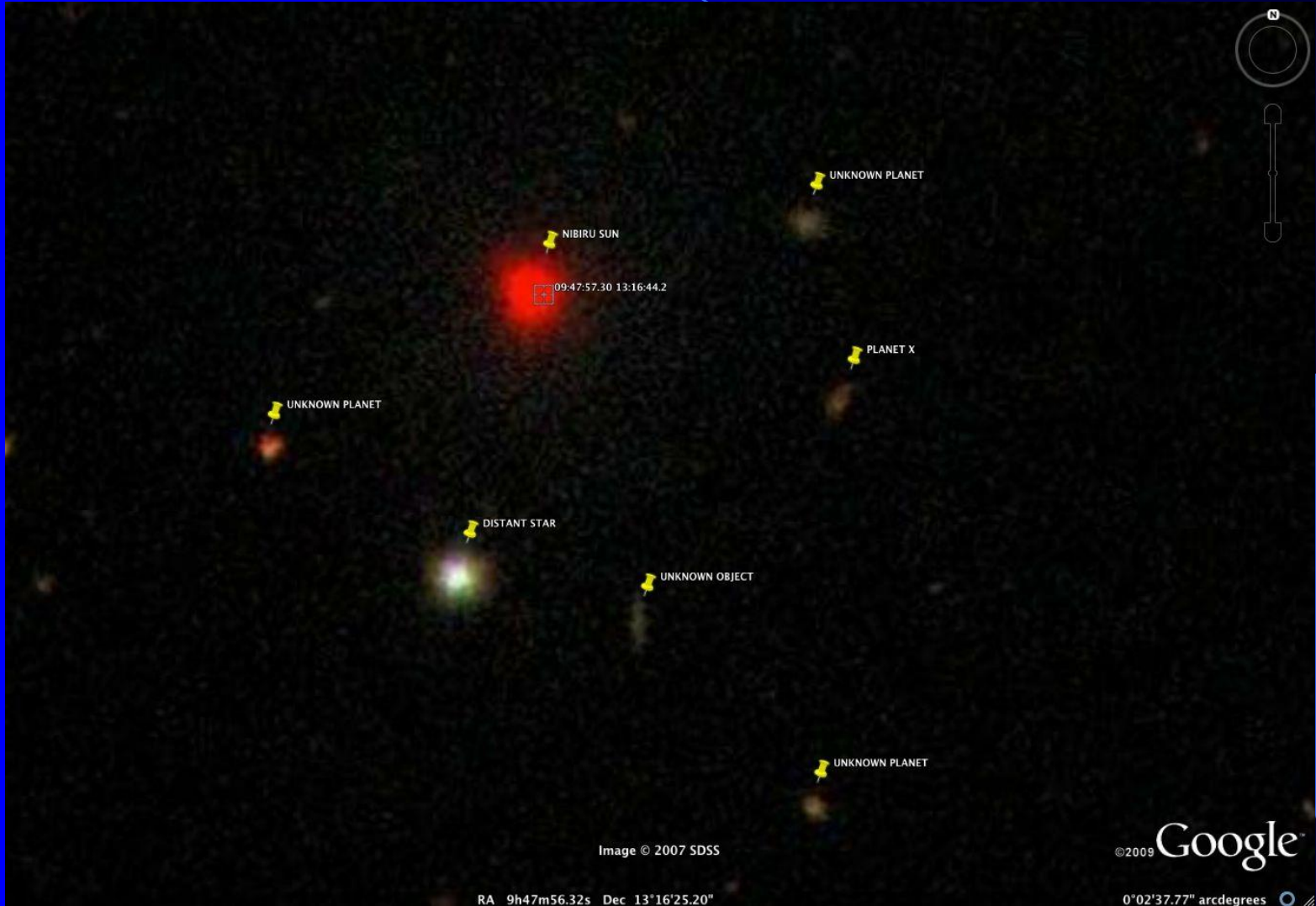


Photo of the Brown Dwarf released at the Internet

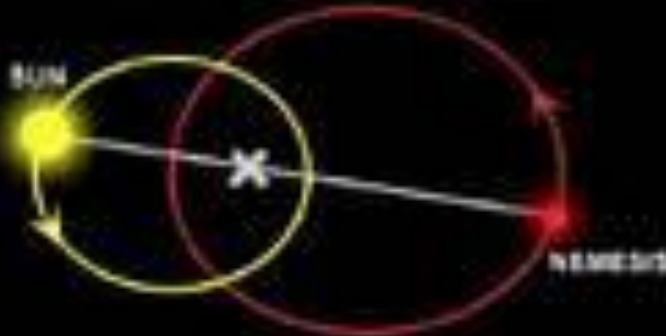


ネメシスの軌道

The Orbit of Nemesis

Stars in a binary system orbit around a center of mass that is closer to the larger star. The orbits cross, but the stars do not collide because they are always on opposite sides of the center of mass (x). This diagram, not to scale, shows how Nemesis – if it exists – might orbit the Sun.

When the two stars are at their greatest separation ...



... and at their closest



How Far is Far?

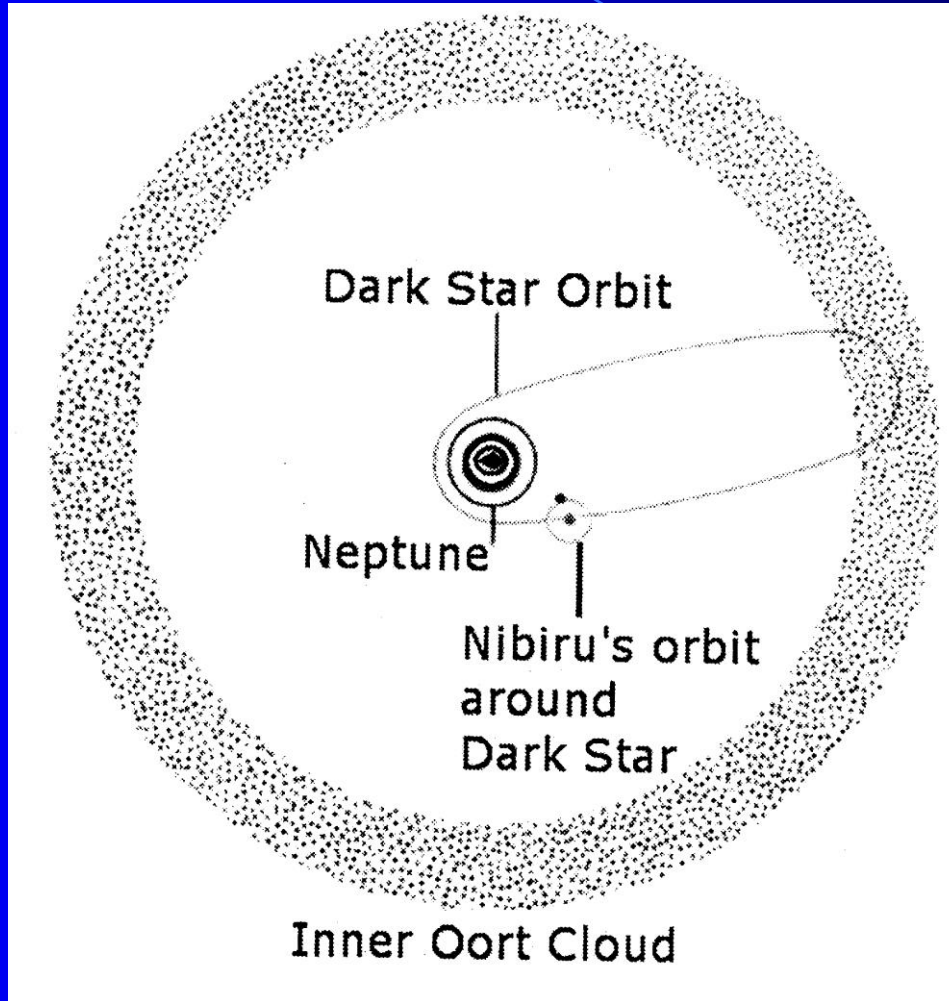
Nemesis is predicted to range from 1 to 3 light-years (ly) from the Sun. Shown also is the nearest known star, Proxima Centauri. On this scale, distant Pluto is too close to be marked.



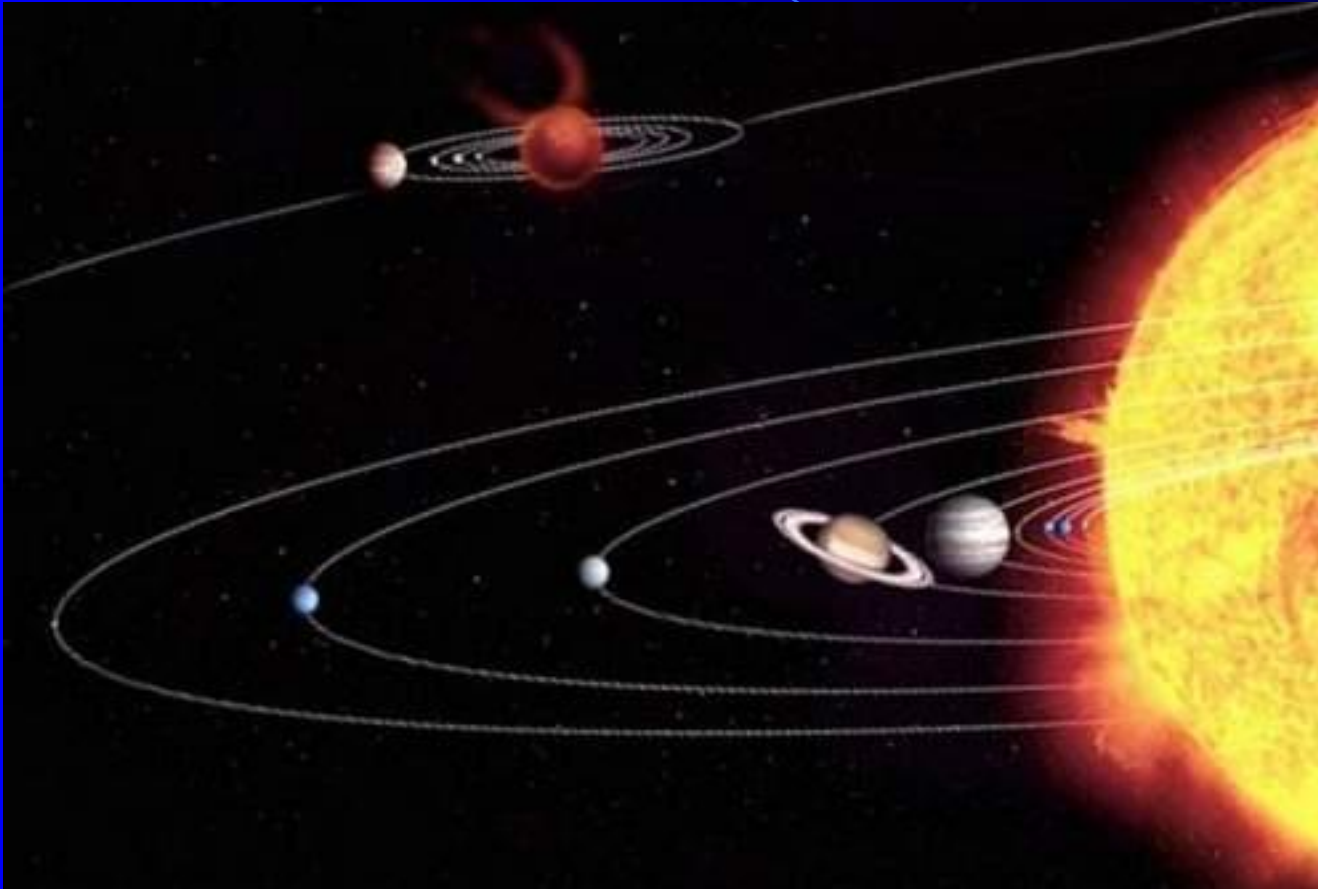
ROBERT ROY BRITTY / SPACE.COM

SOURCE: HOWARD A. MILLER, SPANSEDE, IN KALPURNIA & FRIEDMAN

ネメシスとニビルの軌道



The Structure of the Solar System



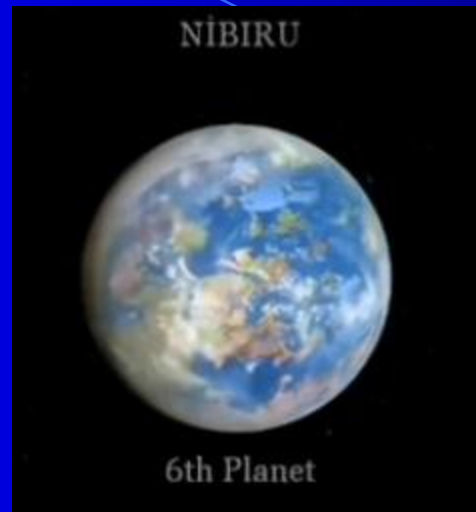
Planets of Dark companion of the Sun



ゼカリア・シッチンとシュメール文献



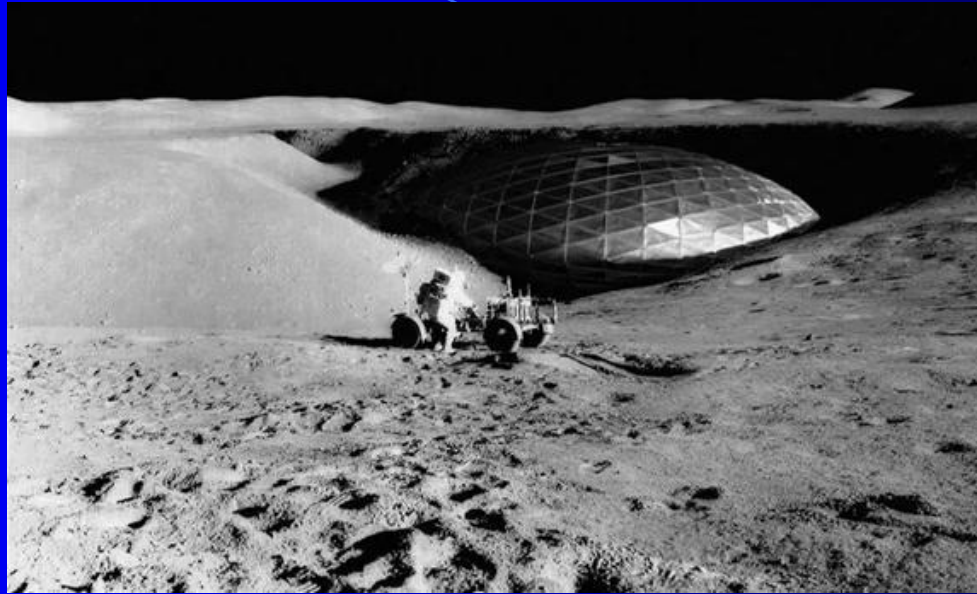
惑星ニビルとアヌナキ



人類は太陽系外存在により造られた？



月の上で発見された構造物



ニビル接近により引き起こされる太陽の異変



Pole Shift induced by the crossing planet



Underground Bases in the United States



View from the planet orbiting the Dark Star



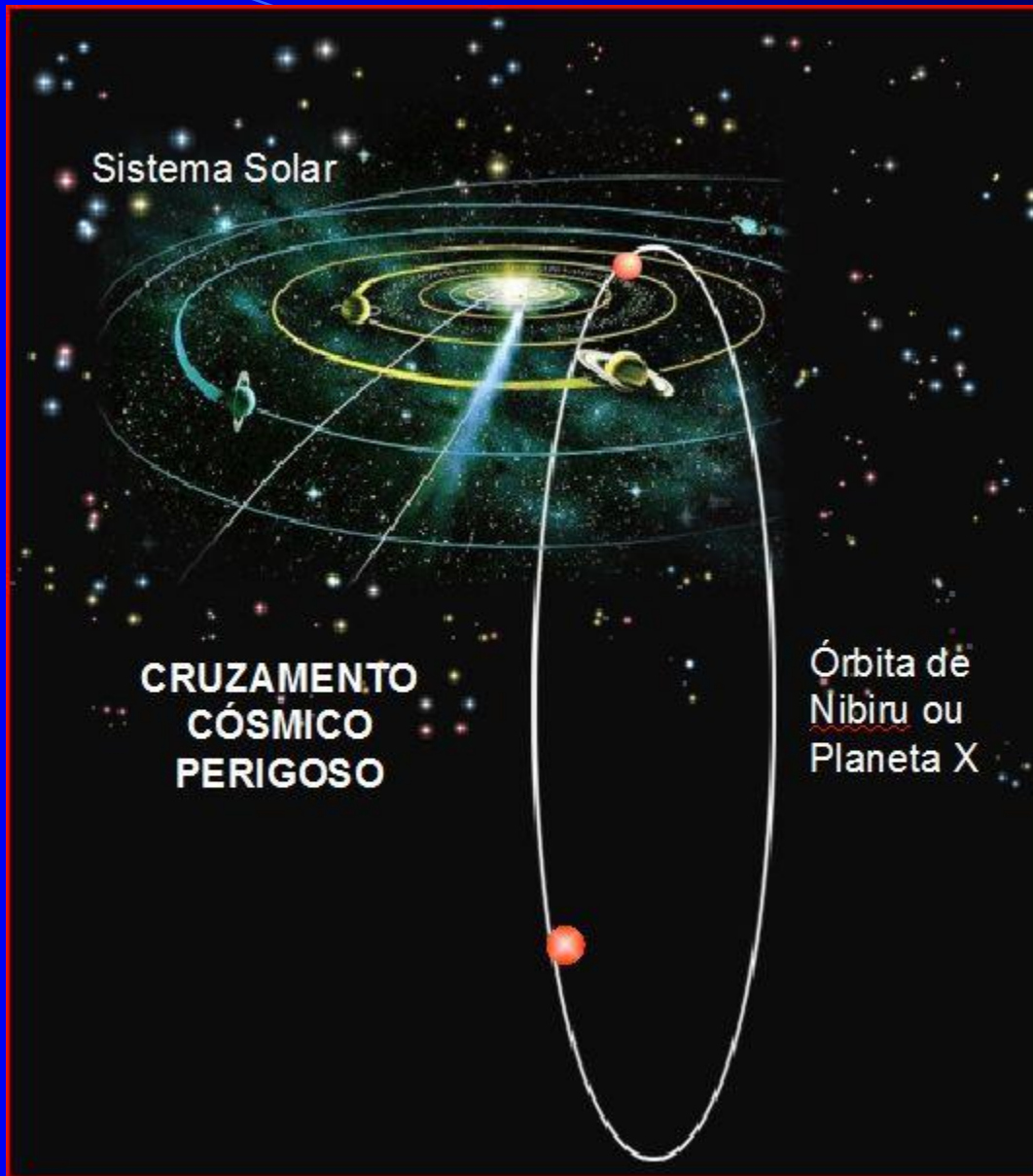
A graphic design featuring a large, light blue arc that starts at the top left and curves towards the bottom right. The arc is set against a solid black background. The word "End" is written in a white, serif font, positioned in the center of the arc. The arc's color transitions from a very light blue at the top left to a darker blue at the bottom right.

End

Sistema Solar

**CRUZAMENTO
CÓSMICO
PERIGOSO**

Órbita de
Nibiru ou
Planeta X



Orbit of the Crossing Star

